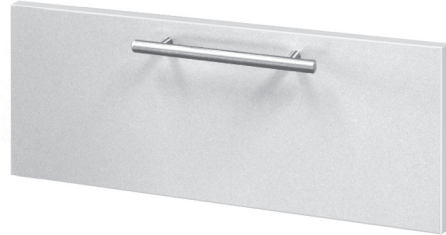




A: Full Pull



Q: Square, Satin Nickel Bar Pull



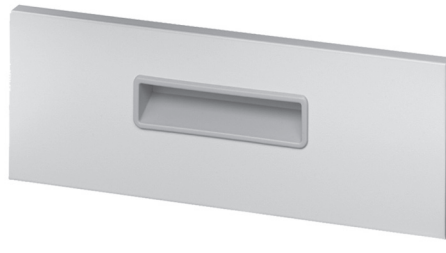
S: Square, Satin Nickel Loop Pull  
(Add "B" suffix for black pull)



P: Square, P Pull



B: S-9000 Pull



F: Square, Recessed Pull



H: Square, HW Pull



D: Radiused, Recessed Pull



I: Radiused, HW Pull



N: Radiused, Satin Nickel Pull  
(Add "B" suffix for black pull)